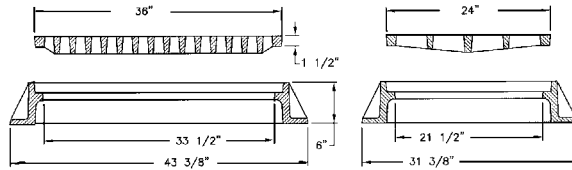
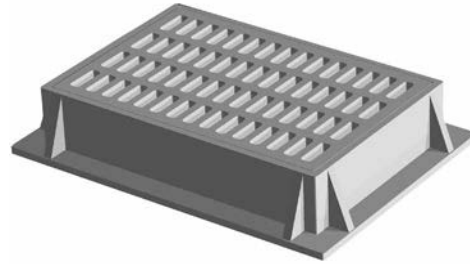


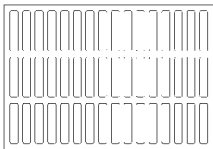
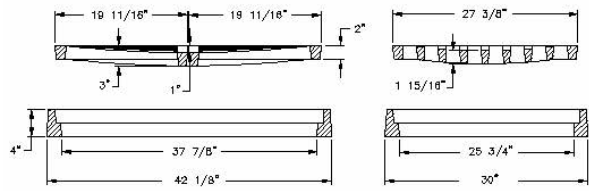
V-4868-2 FRAME & GRATE

Heavy duty
Approximately 337 sq. in. open area



V-4870 INLET FRAME & GRATE

Light duty (Non-traffic)
Uses two grates
Approximate 528 sq. in. open area
V-4870 concave grate light duty
(Non-traffic) 264 sq. in. open area

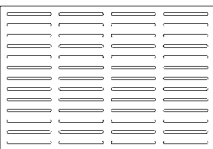
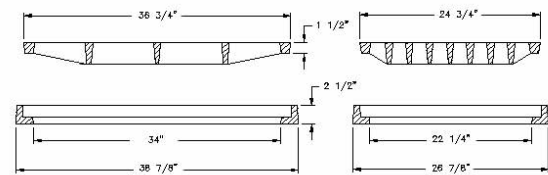


V-4870-1 Grate
Approx. 528 sq. in.
open area

V-4873 INLET FRAME & GRATE

Heavy duty
Approximate 485 sq. in. open area

Options
V-4873-1 ADA grate
V-4870 concave grate light duty
(Non-traffic) 264 sq. in. open area



V-4873-1 ADA Grate
Approx. 195 sq. in.
open area

Supplied By:



877-903-7246

www.trenchdrainsupply.com

